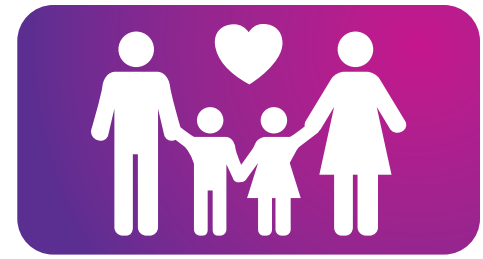




FAMILY PROGRAMS

JULY 2022

SNOQUALMIE



SUNDAY	MONDAY	TUESDAY	WEDNESDAY	THURSDAY	FRIDAY	SATURDAY
FAMILY TIME*: 1:00-1:45PM	KIDS ZONE CLOSED	KIDS ZONE: 9:00AM-12:00PM 4:30-8:00PM	KIDS ZONE: 9:00AM-12:00PM 4:30-8:00PM	KIDS ZONE: 9:00AM-12:00PM 4:30-8:00PM	KIDS ZONE: 9:00AM-12:00PM	KIDS ZONE: 8:30-10:00AM
FAMILY TIME*: 1:00-1:45PM	KIDS ZONE: 9:00AM-12:00PM 4:30-8:00PM	KIDS ZONE: 9:00AM-12:00PM 4:30-8:00PM	KIDS ZONE: 9:00AM-12:00PM 4:30-8:00PM	KIDS ZONE: 9:00AM-12:00PM 4:30-8:00PM	KIDS ZONE: 9:00AM-12:00PM	KIDS ZONE: 8:30-10:00AM
FAMILY TIME*: 1:00-1:45PM	KIDS ZONE: 9:00AM-12:00PM 4:30-8:00PM	KIDS ZONE: 9:00AM-12:00PM 4:30-8:00PM	KIDS ZONE: 9:00AM-12:00PM 4:30-8:00PM	KIDS ZONE: 9:00AM-12:00PM 4:30-8:00PM	KIDS ZONE: 9:00AM-12:00PM	KIDS ZONE: 8:30 - 10:00 AM FAMILY NIGHT: SPLISH SPLASH* 4:30-6:00PM
FAMILY TIME*: 1:00-1:45PM	KIDS ZONE: 9:00AM-12:00PM 4:30-8:00PM	KIDS ZONE: 9:00AM-12:00PM 4:30-8:00PM	KIDS ZONE: 9:00AM-12:00PM 4:30-8:00PM	KIDS ZONE: 9:00AM-12:00PM 4:30-8:00PM	KIDS ZONE: 9:00AM-12:00PM	30 KIDS ZONE: 8:30-10:00AM 31 KIDS ZONE: 8:30-10:00AM

MULTIPLE AGES

SNOQUALMIE VALLEY YMCA

FAMILY PROGRAMS

July 2022

KIDS ZONE

Kids Zone is a unique drop-in care program for ages 6 weeks to 13 years old that allows adults to focus on pursuing their whole person health goals at the Y, while their kids are engaging in a fun, safe, and caring environment. Kids Zone includes Kids Corner, Adventure Zone and Tween Scene. It is included in your family membership. A supervising adult must remain at the Y.

*Please note Kids Zone is closed on July 4th.

Drop-in during one of these times for up to 90 minutes:
Monday - Thursday: 9:00AM- 12:00PM (6 wks - 9 yrs)
Monday - Thursday: 4:30-8:00PM (6 wks-13 yrs)
Friday: 8:30-10:00AM (6 wks-13 yrs)
Saturday: 8:30-10:00AM (6 wks-13 yrs)
FREE with Family 1 or Family 2 membership

FAMILY NIGHT: Pirates at the Y!

Friday, July 29, 6:40-7:30pm & 7:40-8:30pm
(Activity Pool)
All ages; FREE
Family 1 or 2 membership is required

RESERVE YOUR BIRTHDAY PARTY TODAY!

Dates available for July & August - Book today!
September & October dates are available to book 7/15
If you have any questions, email:
sammamishparties@seattleyymca.org

Game On!

Birthday party games and sports galore! From Gaga Ball to basketball and more, kids play their game of choice under the coaching of our skilled hosts.
Recommend ages: 5 and up; \$250 FM / \$300 CM

KIDS CREATE - BATH BOMBS

Inspire creativity and imagination in this art workshop for kids where they will learn to make bath bombs from start to finish.

Tuesday, July 19

\$12 FM / \$18 CM

Ages 7-10; 5:30-6:30pm

Ages 11-14; 7-8pm

PARENTS' NIGHT OUT

Parents' Night Out is the perfect way to give yourself some TLC while your kids play and learn alongside their peers. Rest easy knowing that your children are engaged in activities such as arts and crafts, group games, or active play in a safe, trusted place. A balanced dinner is provided and always includes vegetarian options.

Friday, July 22 6:00-10:00pm

Ages 6 weeks-3 & 3-9 yrs

Cost: \$40/child FM / \$60/child CM

*Please inquire about options for ages 10 & 11

TWEEN & TEEN BADMINTON

Try something new at the Y! Learn basic swings, footwork and the rules of badminton. Practice and build skills through fun drills and games. Racquets, nets and shuttlecocks provided. This program takes place at the CWU campus near Eastlake HS.

Wednesdays, July 6-August 10

Ages 8-17; \$72 FM / \$108 CM

Tween Badminton: 4:30-5:30pm

Tween Badminton: 5:35-6:35pm

Teen Badminton: 6:40-7:40pm

BASKETBALL SKILLS ACADEMY - ROOKIES & JUNIORS

Basketball Skills Academy welcomes kids to practice the fundamentals of dribbling, shooting, passing, offense and defense through fun drills and games. Led by Y staff, our sports academy curriculum is centered on building skills, respect, teamwork and helping kids feel confident on the court. This program takes place at the CWU campus near Eastlake HS.

Mondays, July 11 - August 15

Rookies: 4:30-5:30pm

Rookies: 5:35-6:35pm

Juniors: 6:40-7:40pm

Juniors: 7:45-8:45pm

Ages 5-12, \$72 FM / \$108 CM

* Reservation Required

FM= Facility Member

\$ Fee Based Program

CM= Community Member